

California Association of Health and Education Linked Professions,
Joint Powers Authority (CAHELP, JPA)
DESERT MOUNTAIN CHARTER SELPA STEERING and FINANCE COMMITTEE MEETING
May 18, 2023 – 1:00 p.m.
Desert Mountain Educational Service Center, 17800 Highway 18, Apple Valley CA 92307

AGENDA

TELECONFERENCE LOCATIONS

ASA Charter School – 3512 North E Street, San Bernardino CA 92405
Aveson Global Leadership Academy – 575 West Altadena Dr, Altadena CA 91001
Elite Academic Academy – Lucerne, 43414 Business Park Dr, Temecula CA 92590
Julia Lee Performing Arts Academy – 19740 Grand Ave, Lake Elsinore CA 92584
Leonardo Da Vinci Health Sciences Charter School – 229 E Naples St, Chula Vista, CA 91911

1.0 CALL TO ORDER

2.0 ROLL CALL

3.0 PUBLIC PARTICIPATION

The public is encouraged to participate in the deliberation of the Desert Mountain Charter SELPA Steering and Finance Committee. Several opportunities are available during the meeting for the Council to receive oral communication regarding the presentations of any items listed on the agenda. Please ask for recognition either before a presentation or after the presentation has been completed. Please complete and submit a “Registration Card to Address the Desert Mountain Charter SELPA Steering and Finance Committee” to the Recording Secretary and adhere to the provisions described therein.

4.0 ADOPTION OF THE AGENDA

4.1 **BE IT RESOLVED** that the May 18, 2023 Desert Mountain Charter SELPA Steering and Finance Committee Meeting Agenda be approved as presented.

5.0 CONSENT ITEMS

It is recommended that the Desert Mountain Charter SELPA Steering and Finance Committee consider approving several Agenda items as a Consent list. Consent Items are routine in nature and can be enacted in one motion without further discussion. Consent items may be called up by any Committee Member at the meeting for clarification, discussion, or change.

5.1 **BE IT RESOLVED** that the following Consent Items be approved as presented:

5.1.1 Approve the April 20, 2023 Desert Mountain Charter SELPA Steering and Finance Committee Meeting Minutes.

6.0 CHIEF EXECUTIVE OFFICER AND STAFF REPORTS

6.1 Legislative Update

Pam Bender will present a legislative update.

DESERT MOUNTAIN CHARTER SELPA STEERING and FINANCE COMMITTEE MEETING

May 18, 2023 – 1:00 p.m.

Desert Mountain Educational Service Center, 17800 Highway 18, Apple Valley CA 92307

AGENDA

6.2 Risk Pool Contributions and Obligations to Desert Mountain Charter SELPA (DMCS)

Pam Bender will review the member Risk Pool Contributions and the member obligations to DMCS.

6.3 2023-24 Desert Mountain Charter SELPA Steering and Finance Committee Schedule of Meetings

Pam Bender will present the 2023-24 Desert Mountain Charter Steering and Finance Committee Schedule of Meetings for feedback.

6.4 Desert Mountain Children’s Center Client Services Reports and Update

Linda Llamas will present the Desert Mountain Children’s Center Client Services monthly reports and updates.

6.5 Professional Learning Summary and Update

Heidi Chavez will present the Desert Mountain Charter SELPA’s Professional Learning Summary.

6.6 Resolution Support Services Summary and Update

Sheila Parisian will present the Desert Mountain Charter SELPA’s Resolution Support Services Summary and update.

6.7 Compliance Update

Peggy Dunn will present an update on compliance items from the California Department of Education (CDE).

7.0 FINANCE COMMITTEE REPORTS

7.1 Learning Recovery Support, Dispute Prevention and Resolution Funding Updates

Marina Gallegos will provide Learning Recovery Support, Dispute Prevention and Resolution Funding Updates.

8.0 INFORMATION ITEMS

8.1 Monthly Occupational & Physical Therapy Services Reports

8.2 Upcoming Professional Learning Opportunities

California Association of Health and Education Linked Professions,
Joint Powers Authority (CAHELP, JPA)
DESERT MOUNTAIN CHARTER SELPA STEERING and FINANCE COMMITTEE MEETING
May 18, 2023 – 1:00 p.m.
Desert Mountain Educational Service Center, 17800 Highway 18, Apple Valley CA 92307

AGENDA

9.0 STEERING COMMITTEE MEMBERS COMMENTS / REPORTS

10.0 CEO COMMENTS

11.0 MATTERS BROUGHT BY THE PUBLIC

This is the time during the agenda when the Desert Mountain Charter SELPA Steering and Finance Committee is again prepared to receive the comments of the public regarding items on this agenda or any school related special education issue. Speakers are requested to give their name and limit their remarks to five minutes.

Persons wishing to make complaints against Desert Mountain Charter SELPA Steering and Finance Committee personnel must have filed an appropriate complaint form prior to the meeting.

When the Desert Mountain Charter SELPA Steering and Finance Committee goes into Closed Session, there will be no further opportunity for general public to address the Council on items under consideration.

12.0 ADJOURNMENT

The next regular meeting of the Desert Mountain Charter SELPA Steering Committee will be held on Thursday, June 15, 2023, at 1:00 p.m., at the Desert Mountain Educational Service Center, Aster/Cactus Room, 17800 Highway 18, Apple Valley, CA 92307.

Individuals requiring special accommodations for disabilities are requested to contact Jamie Adkins at (760) 955-3555, at least seven days prior to the date of this meeting.

DESERT MOUNTAIN CHARTER SELPA STEERING and FINANCE COMMITTEE MEETING

April 20, 2023 – 1:00 p.m.

Desert Mountain Educational Service Center, 17800 Highway 18, Apple Valley CA 92307

MINUTES

DESERT MOUNTAIN CHARTER SELPA MEMBERS PRESENT:

Allegiance STEAM Academy – Callie Moreno, Desert Trails Prep/LaVerne Elementary – Debbie Tarver via web Ex, Chantal Mendoza, Elite Academic Academy – Jen Edick, Adam Woodard both via Web Ex, Encore Jr/Sr High – Bernice Swingle, Julia Lee Performing Arts Academy – Hannah Morales via Web Ex, Leonardo da Vinci Health Sciences Charter – Anne Laird, Taylion High Desert – Brenda Congo, Karen Ware, and Virtual Prep-Lucerne – Malia Lovell.

CAHELP, DMSELPA, & DMCC STAFF PRESENT:

Jamie Adkins, Pam Bender, Ivan Campos, Heidi Chavez, Danielle Cote, Peggy Dunn, Marina Gallegos, Colette Garland, Derek Hale, Linda Llamas, Maurica Manibusan, Isaac Medina, Angela Mgbeke, Lisa Nash, Sheila Parisian, Karina Quezada, Linda Rodriguez, Jennifer Rountree, Veronica Rousseau, Adrienne Shepherd-Myles, and Jennifer Sutton.

1.0 CALL TO ORDER

The regular meeting of the California Association of Health and Education Linked Professions, Joint Powers Authority (CAHELP, JPA) Desert Mountain Charter SELPA Steering and Finance Committee Meeting was called to order by Chairperson Pam Bender at 1:07 p.m., at the Desert/Mountain Educational Service Center, Apple Valley.

2.0 ROLL CALL

3.0 PUBLIC PARTICIPATION

None.

4.0 ADOPTION OF THE AGENDA

4.1 **BE IT RESOLVED** that a motion was made by Callie Moreno, seconded by Karen Ware, to approve the April 20, 2023 Desert Mountain Charter SELPA Steering and Finance Committee Meeting Agenda as presented. The motion carried on the following vote: 8:0:0: Ayes: Edick, Laird, Lovell, Morales, Moreno, Swingle, Tarver, and Ware. Nays: None. Abstentions: None.

5.0 PUBLIC HEARINGS

5.1 Desert Mountain Charter SELPA Annual Budget Plan (**ACTION**)

California Education Code requires that an Annual Budget Plan be approved by the CAHELP JPA Governance Council as part of the Local Plan. The 2023-24 Annual Budget Plan describes the revenues and expenditures for special education for all local education agencies in the Desert Mountain Charter SELPA.

DESERT MOUNTAIN CHARTER SELPA STEERING and FINANCE COMMITTEE MEETING

April 20, 2023 – 1:00 p.m.

Desert Mountain Educational Service Center, 17800 Highway 18, Apple Valley CA 92307

MINUTES

5.1.1 **BE IT RESOLVED** that a motion was made by Malia Lovell, seconded by Callie Moreno, to approve the Desert Mountain Charter SELPA 2023-24 Annual Budget Plan as presented. The motion carried on the following vote: 8:0:0: Ayes: Edick, Laird, Lovell, Morales, Moreno, Swingle, Tarver, and Ware. Nays: None. Abstentions: None.

5.2 Desert Mountain Charter SELPA Annual Service Plan (**ACTION**)

California Education Code requires that an Annual Service Plan be approved by the CAHELP Governance Council as part of the Local Plan. The 2023-24 Annual Service Plan describes all special education services currently provided in the Desert Mountain Charter SELPA broken down by type, location, and level of severity.

5.2.1 **BE IT RESOLVED** that a motion was made by Callie Moreno, seconded by Malia Lovell, to approve the Desert Mountain Charter SELPA 2023-24 Annual Service Plan as presented. The motion carried on the following vote: 8:0:0: Ayes: Edick, Laird, Lovell, Morales, Moreno, Swingle, Tarver, and Ware. Nays: None. Abstentions: None.

6.0 INFORMATION/ACTION

6.1 Form D/M 120A Occupational Therapy Referral (**ACTION**)

Forms used in the operations of special education programs within the Desert Mountain Charter SELPA are developed, reviewed and revised throughout the year upon the recommendation of the Program Team. Forms are modified as necessary in order to support the operations of special education programs in an efficient, effective and legally compliant manner. Suggested revisions to SELPA Forms are submitted to the DMCS Steering Committee for consideration and approval.

6.1.1 **BE IT RESOLVED** that a motion was made by Callie Moreno, seconded by Malia Lovell, to approve the Form D/M 120A Occupational Therapy Referral as presented. The motion carried on the following vote: 8:0:0: Ayes: Edick, Laird, Lovell, Morales, Moreno, Swingle, Tarver, and Ware. Nays: None. Abstentions: None.

6.2 Form D/M 120B Physical Therapy Referral (**ACTION**)

Forms used in the operations of special education programs within the Desert Mountain Charter SELPA are developed, reviewed and revised throughout the year upon the recommendation of the Program Team. Forms are modified as necessary in order to support the operations of special education programs in an efficient, effective and legally compliant manner. Suggested revisions to SELPA Forms are submitted to the DMCS Steering Committee for consideration and approval.

6.2.1 **BE IT RESOLVED** that a motion was made by Callie Moreno, seconded by Malia Lovell, to approve the Form D/M 120A Physical Therapy Referral as presented. The motion carried on the following vote: 8:0:0: Ayes: Edick, Laird, Lovell, Morales,

California Association of Health and Education Linked Professions,
Joint Powers Authority (CAHELP, JPA)
DESERT MOUNTAIN CHARTER SELPA STEERING and FINANCE COMMITTEE MEETING
April 20, 2023 – 1:00 p.m.
Desert Mountain Educational Service Center, 17800 Highway 18, Apple Valley CA 92307

MINUTES

Moreno, Swingle, Tarver, and Ware. Nays: None. Abstentions: None.

7.0 CONSENT ITEMS

It is recommended that the Desert Mountain Charter SELPA Steering and Finance Committee consider approving several Agenda items as a Consent list. Consent Items are routine in nature and can be enacted in one motion without further discussion. Consent items may be called up by any Committee Member at the meeting for clarification, discussion, or change.

7.1 **BE IT RESOLVED** that a motion was made by Callie Moreno, seconded by Malia Lovell, to approve the following Consent Items as presented. The motion carried on the following vote: 8:0:0: Ayes: Edick, Laird, Lovell, Morales, Moreno, Swingle, Tarver, and Ware. Nays: None. Abstentions: None.

7.1.1 Approve the January 26, 2023 Desert Mountain Charter SELPA Steering and Finance Committee Meeting Minutes.

7.1.2 Approve the March 23, 2023 Desert Mountain Charter SELPA Steering and Finance Committee Meeting Minutes.

8.0 CHIEF EXECUTIVE OFFICER AND STAFF REPORTS

8.1 Legislative Update

Pam Bender presented a legislative update, sharing the current status of several bills. She reported all bills must be heard by May 15, 2023. Wednesday, May 3, 2023 is Legislative Day when people can speak to the legislators about bills they support and the reasons for their support. Pam said she will provide an update as information is received.

8.2 Learning Recovery Support, Dispute Prevention and Resolution Funds Update

Pam Bender provided Learning Recovery Support, Dispute Prevention and Resolution Funds Update. She said there is still a large amount of money available in both funding sources and if funds are not used, it will be returned to the state. If ideas are needed for items that can be claimed, Pam asked for committee members to contact Heidi Chavez or Kathleen Peters. She said if there is concern about Maintenance of Effort (MOE), to contact Marina Gallegos. Pam suggested reviewing invoices and purchases as well as looking at funds from general education monies that were used and can be reimbursed. Pam shared that SELPAs across the state are facing the same issue with having funds remaining. Pam concluded by asking any LEAs that will not be using their allotted funds to notify Heidi or Kathleen so that portions can be accessed by another LEA.

MINUTES

8.3 Alternative Diploma Pathway Update

Pam Bender provided an Alternative Diploma Pathway update. She explained Assembly Bill (AB) 181 contained many items, including Educationally Related Mental Health Services (ERMHS) funding going to LEAs and independent study. There was not much discussion around this bill or the many items it included. Pam reiterated that a student receiving the alternative diploma continues to have special education eligibility until they are 22 years of age. She reviewed the requirements of the pathway: parent notification by 10th grade, have taken the California Alternative Assessment (CAA) in 11th grade, and must complete state standard aligned coursework that meets the California state law. Pam continued that CDE still has not provided guidance though they have formed a workgroup. She continued that it is only 1% of the student population that is eligible to take the CAA and that it is important to begin having conversations with those parents. Pam said it is not based on functional skills but coursework.

8.4 Desert Mountain Children’s Center Client Services Reports and Update

Linda Llamas presented the Desert Mountain Children’s Center Client Services monthly reports and updates. She said the LEA point of contact has been sent the reports via encrypted email. Linda asked to be contacted if there are questions about the reports or if a committee member would like to review the reports with her. Linda shared a research article on the rise of eating disorders being prevalent in children during the pandemic.

8.5 Professional Learning Summary and Update

Heidi Chavez presented the Desert Mountain Charter SELPA’s Professional Learning Summary. She said her team will be scheduling professional learning conversations so get input on what the LEAs need. Heidi said these meetings can include other LEA staff that so that everyone is on the same page. She reported the Directors’ Training will take place on April 21, 2023 at noon in person with Jack Clarke, attorney from Atkinson, Andelson, Loya, Ruud and Romo (AALRR). She asked for people who will be attending to register to ensure adequate materials. Heidi continued sharing the LGBTQIA+ Language, Sensitivity, and Legislation training that will take place on Wednesday, May 17, 2023, 8:30am-12:30pm with Ami Davis. Heidi reported Celebrating Families is a resiliency program that goes beyond drug and alcohol use. It is a 16-week program and the next cohort begins in August. Heidi shared the IMTSS Symposium Save the Date flyer for February 21, 2024. She reported there will be a Community Advisory Committee (CAC) Meeting on April 20, 2023 with the representative meeting from 5:00-5:30pm followed by a presentation on PBIS in the home. Heidi concluded that a survey will be emailed to the special education directions asking for input on topics for the 2023-24 Directors’ Trainings.

Jennifer Rountree provided information on CAHELP Peers Training program. She shared it is a social skills program for adolescents with social skills challenges, primarily autism but it also supports other social needs as well. There is also a component for parents or anyone 18 or older

California Association of Health and Education Linked Professions,
Joint Powers Authority (CAHELP, JPA)
DESERT MOUNTAIN CHARTER SELPA STEERING and FINANCE COMMITTEE MEETING
April 20, 2023 – 1:00 p.m.
Desert Mountain Educational Service Center, 17800 Highway 18, Apple Valley CA 92307

MINUTES

that supports these students. There is a referral process and August when the next cohort begins. Jennifer said she is asking for any LEAs that might be interested in doing the school-based curriculum to contact her as there is an option for LEAs to offer training at the school level.

8.6 Resolution Support Services Summary and Update

Lisa Nash presented the Desert Mountain Charter SELPA's Resolution Support Services Summary and update. Lisa reminded the committee member to be sure IEPs are closed that they contain a firm offer of free appropriate public education (FAPE). Lisa spoke about the recent Ninth Circuit Court of Appeals decision of *Perez v. Sturgis Community Schools*. The decision states the exhaustion requirement does not apply when plaintiff brings suit under another federal law (IDEA or Section 504) for compensatory damages. This will cause an uptick in claims for monetary damages by students with IEPs because under Due Process, plaintiffs can get compensatory services.

8.7 Compliance Update

Peggy Dunn presented an update on compliance items from the California Department of Education (CDE). She reported two charter schools received the Annual Determination Letters this year. The DMCS team will work with the schools to satisfy the required activities. Peggy continued that LEAs involved in Cyclical Monitoring are now in Phase 3 which is student records review. The IEP Data Collection window will be open March 1-April 28, 2023 and is the period when CDE will pull their data. Peggy will forward any information she receives from CDE to the appropriate LEA. Peggy reported the number of overdue IEPs is increasing and encouraged directors to continue working on decreasing those numbers.

Colette Garland provided a SEIS Overview for the directors. She reviewed the PowerPoint that included the training dates and formats, the transition process, and data on CALPADS End-of-Year information. Colette shared that if any LEA needs deeper discussion, she is available for discussion and to assist.

8.8 Prevention and Intervention Update

Angela Mgbeke presented the Prevention and intervention Update. She shared the California PBIS Recognition Timeline stating the application window will close on May 12, 2023. Angela said that if an LEA is not contracted with DMCS for prevention and intervention services, the LEA can contact the team for supports.

9.0 FINANCE COMMITTEE REPORTS

9.1 Proposed 2023-24 Desert Charter Mountain SELPA Budget

California Association of Health and Education Linked Professions,
Joint Powers Authority (CAHELP, JPA)
DESERT MOUNTAIN CHARTER SELPA STEERING and FINANCE COMMITTEE MEETING
April 20, 2023 – 1:00 p.m.
Desert Mountain Educational Service Center, 17800 Highway 18, Apple Valley CA 92307

MINUTES

Marina Gallegos presented the proposed 2023-24 Desert Mountain SELPA Budget. She shared the different funding sources and budget assumptions as well as the specifics for the different allocations.

9.2 Proposed 2023-24 Desert Charter Mountain SELPA Fee-For-Service Rates

Marina Gallegos presented the proposed 2023-24 Desert Mountain SELPA Fee-For-Service rates. She explained the fees are to support the OT/PT services and some mental health services. Marina continued that the SELPA-Related Services fees are what apply to DMCS. She reported the 8.3% increase is what was presented in the governor's January budget proposal.

Marina talked about Learning Recovery Support, Dispute Prevention and Resolution funds. She said funds are to be encumbered by June 30, 2023 and spent by September 30, 2023. Marina reported the LEAs can submit for prior year expenses 2021-22 and encouraged the members to review their books for any expenses that might be covered.

10.0 INFORMATION ITEMS

10.1 2022-23 Personnel Data Reports

10.2 Monthly Occupational & Physical Therapy Services Reports

10.3 Upcoming Professional Learning Opportunities

11.0 STEERING COMMITTEE MEMBERS COMMENTS / REPORTS

None.

12.0 CEO COMMENTS

Pam Bender shared a quote about leadership and working with teams. She reminded the attendees to be kind and mindful of the people they lead as the end of the year activities gear up.

13.0 MATTERS BROUGHT BY THE PUBLIC

None.

14.0 ADJOURNMENT

Having no further business to discuss, a motion was made by Callie Moreno, seconded by Malia Lovell, to adjourn the meeting at 2:25 pm. The motion carried on the following vote: 8:0:0: Ayes: Laird, Lovell, Morales, Moreno, Swingle, Tarver, Ware, and Woodard. Nays: None. Abstentions: None.

California Association of Health and Education Linked Professions,
Joint Powers Authority (CAHELP, JPA)

DESERT MOUNTAIN CHARTER SELPA STEERING and FINANCE COMMITTEE MEETING

April 20, 2023 – 1:00 p.m.

Desert Mountain Educational Service Center, 17800 Highway 18, Apple Valley CA 92307

MINUTES

The next regular meeting of the Desert Mountain Charter SELPA Steering Committee will be held on Thursday, May 18, 2023, at 1:00 p.m., at the Desert Mountain Educational Service Center, Aster/Cactus Room, 17800 Highway 18, Apple Valley, CA 92307.

Individuals requiring special accommodations for disabilities are requested to contact Jamie Adkins at (760) 955-3555, at least seven days prior to the date of this meeting.

Legislative Updates from State SELPA

- **AB 1340 (Garcia) School Accountability:** pupils with exceptional needs - post statewide data based on disability on CDE website.
- **SB-323 (Portantino) Pupils with exceptional needs:** IEPs: emergency safety procedures- include in the IEP accommodations needed to support comprehensive school safety plan.
- **SB-445 (Portantino) IEP Translations:** requires translation of the IEP, assessments and progress used to determine IEP into the native language of the parent, or communication type; within 30 days of the meeting; top 8 languages; amendments submitted.
- **AB-611 (Weber) Non Public School Certification:** requires the LEA to notify the parent within 14 days of a change in certification status.
- **AB-723 (Quirk-Silva) Foster Youth:** NPS: School of Origin- makes an NPS the school of origin.
- **AB-723 (Blanca Rubio) Teacher Credentialing:** OT/PT: allows OT/PT as a services credential in health.
- **AB-438 (Rubio) Pupils with exceptional needs:** IEPs: postsecondary goals and transition services- change age to 14.
- **SB-483 (Cortese) Pupil Rights:** Prone Restraint- eliminates prone restraint.
- **AB 1466 (Weber) Pupil Discipline:** Restraint and Seclusion- requires restraint and seclusion data to be posted on the LEA website.
- **SB 691 (Portantino)- Dyslexia Risk Screening:** June 2024 SBE provides list of screening instruments; in 24-25 screen all K-2nd graders for dyslexia within first 90 days of school; new students within 30 days of enrollment; within 45 days of administration, notify parents of results and provide resources; LEA to provide evidence-based literacy instruction, progress monitoring, and interventions within general education program.
- **SB 88 (Skinner) Pupil Transportation: Driver Qualifications-** for drivers who operate a vehicle with a max of 10; criminal background check, fingerprinting, mandated reporter, TB, drug and alcohol testing, training and classes.
- **AB-447 (Arambula) Public postsecondary education:** SWD: inclusive college pilot programs- require CSU and request to U of CA to create pilot college inclusive program for students with ID and DD;
- **AB 248 (Mathis) Individuals with intellectual or developmental disabilities:** removes obsolete terminology including “mentally retarded persons” “mentally retarded children” “retardation”:



DESERT / MOUNTAIN
CHARTER SELPA

Chapter 10: Fiscal Allocation Plan

Table of Contents

SECTION A: CHARTER SELPA STATE FUNDING

SECTION B: PRINCIPLES OF FISCAL ALLOCATION PLAN

SECTION C: COMPONENTS OF FISCAL ALLOCATION PLAN

SECTION D: DETERMINING BASE ALLOCATION PER CHARTER LEA

SECTION E: FEE ADJUSTMENTS TO BASE ALLOCATION

SECTION F: CONTRIBUTIONS TO SET-ASIDE POOLS

SECTION G: REIMBURSEMENTS TO SELPA

SECTION H: REIMBURSEMENTS TO CHARTER LEAS

SECTION I: RECAPTURE OF UNSPENT FUNDS

SECTION J: MANDATED FISCAL REPORTING

APPENDIX A: ADA DEFINED

APPENDIX B: APPORTIONMENT DISTRIBUTION SCHEDULE

APPENDIX C: SPECIAL EDUCATION REVENUE DISTRIBUTION MODEL

APPENDIX D: RISK POOL FLOW CHART

Section A – Charter SELPA State Funding

Charter Special Education Local Plan Area (SELPA) funding per California Education Code § 47644:

For each charter school deemed a local educational agency for the purposes of special education, an amount equal to the amount computed pursuant to Section

Section F – Contributions to Set-Aside Pool

It is the intent of the CAHELP Governance Council to establish “set-aside pools” of revenue to ensure the fiscal solvency of the DMCS and to provide funding in support of high due process costs or other unforeseen extraordinary expenses.

Charter LEAs will contribute to approved pools through deductions to monthly state apportionment distributions. These contributions will be calculated based on the approved percentage of each Charter LEA’s Base Allocation and will reduce each Charter LEA’s state apportionment (RS 6500) and be reallocated to the appropriate DMCS account.

The CAHELP Governance Council will determine the maximum amount of each pool to be held in reserve. Any amount above the approved reserve may be used for purposes as recommended by the CEC and approved by the CAHELP Governance Council, or will be returned to Charter LEA members based on a pro-rata share of contribution. Examples of approved usage may include, but not be limited to, support projected extraordinary one-time costs, assistance with new program implementation, offset to the next fiscal year contributions, or may be returned to Charter LEAs using an allocation method to be determined at that time. The CEC will review the percentage of contributions on an annual basis and make recommendations to the CAHELP Governance Council for approval.

The following set-aside pools have been approved by the CAHELP Governance Council:

POOL NAME	DESCRIPTION	DISTRIBUTION SPREADSHEET LOCATION
Insurance Pool	<p>It is the intent of the CAHELP Governance Council to maintain a financial reserve sufficient to support unforeseen costs and to protect the fiscal solvency of the DMCS. This pool will maintain a targeted reserve balance of \$250,000 or 3% of the annual Base Apportionment, whichever is greater.</p> <p>The Insurance Pool contribution is calculated as 3% of each Charter LEA’s Base Allocation and will be reallocated to account DMSA. In addition, any Recapture of Unexpended State Funds (see Section I) will be deposited in the Insurance Pool.</p> <p>Use of funds deposited in the Insurance Pool is at the discretion of the CAHELP Governance Council and will be determined on an annual basis.</p>	<i>Column H</i>

POOL NAME	DESCRIPTION	DISTRIBUTION SPREADSHEET LOCATION
<p>Risk Pool</p>	<p>It is the intent of the CAHELP Governance Council to provide sufficient revenue to support legal and compliance related expenditures. This fund will maintain a targeted reserve of at least \$250,000 or 5% of the annual Base Apportionment, whichever is greater.</p> <p>Contributions to the Risk Pool are calculated as follows:</p> <ul style="list-style-type: none"> • For charters <u>NOT</u> considered “high risk,” the contribution will be set at 5% of the Charter LEA’s Base Allocation beginning the first year. • For Charter LEAs deemed “high risk” by the CEC and the CAHELP Governance Council, the adjustment amount will be calculated based on the following scale: <ul style="list-style-type: none"> ➤ 1st year in “high risk” status: 6% ➤ 2nd year in “high risk” status: 7% ➤ 3rd year in “high risk” status: 8% <p>Refer to Appendix A - Risk Pool Flow Chart for details regarding the levels of “high risk” status.</p> <p>The DMCS Risk Pool has been developed by the CEC to provide revenue for costs in the following designated areas:</p> <ol style="list-style-type: none"> 1. Legal/due process/fair hearing expenditures for both the DMCS and a Charter LEA’s legal counsel related to compliance findings and due process hearings when approved procedures have been followed. Such expenditures do not include the cost of 	<p><i>Column I</i></p>

POOL NAME	DESCRIPTION	DISTRIBUTION SPREADSHEET LOCATION
	<p>compensatory services if included in a settlement agreement.</p> <p>2. Independent Educational Evaluations (IEEs) for Charter LEAs of the DMCS up to \$5,000 annually.</p> <p>3. Expenditures related to compliance and legal assurance monitoring including, but not limited to, management information systems, software development costs, and staffing costs associated with the provision of these services.</p>	

Section G – Nonpublic School/Nonpublic Agency Cost Reimbursements to SELPA

Charter LEAs needing to place a child with disabilities into a Nonpublic School (NPS) and/or Nonpublic Agency (NPA), will develop a contract with the NPS/NPA independent of the DMCS. The DMCS may review the contract(s) for the Charter LEA to verify legal compliance and vendor certification prior to entering into contracts for services. Charter LEAs are encouraged to use the DMCS master contract as a template with the insertion of the Charter LEA name and the NPS/NPA. All costs for services through the NPS/NPA are the responsibility of the Charter LEA.

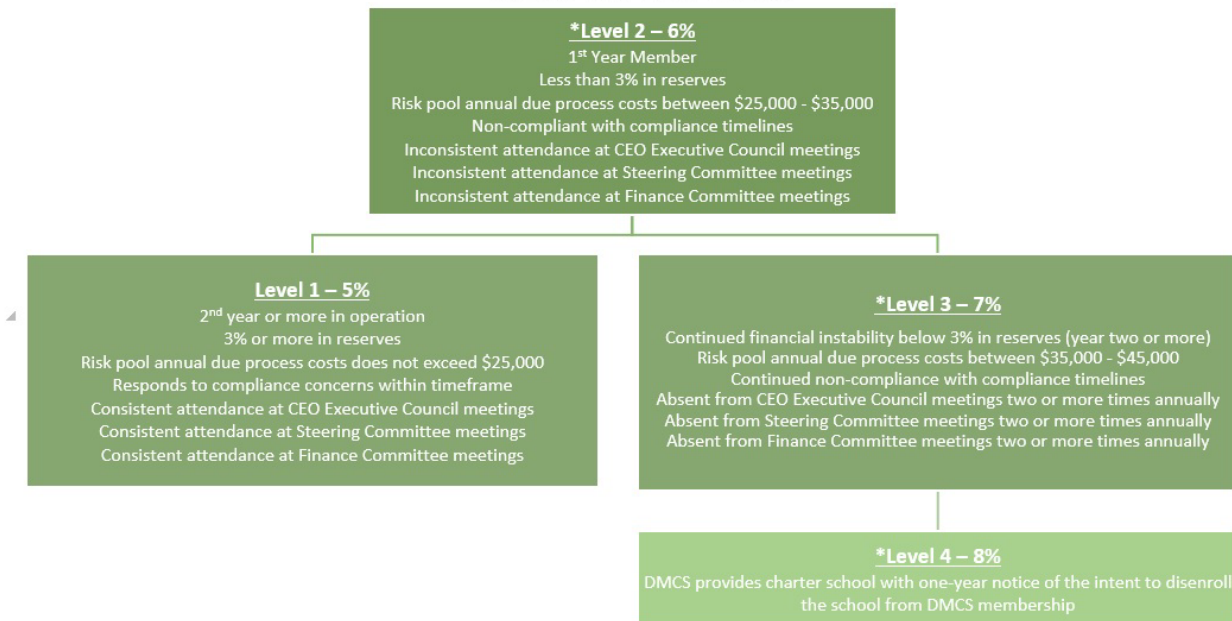
Only NPS/NPA expenses from California Department of Education (CDE) certified providers can be funded from AB602 or federal IDEA dollars. Due to the independent contract with the NPS/NPA, the Charter LEA may pay for the services through AB602, federal IDEA dollars, or other non-special education funding sources. Charter LEAs who contract for services from non-CDE certified providers must pay expenses from other non-special education funding sources.

When a Charter LEA places a child with a disability with a NPS/NPA provider, the Charter LEA must verify through the DMCS that the NPS/NPA provider is CDE-certified. The Charter LEA is then responsible to contract directly with the NPS/NPA, verify and reconcile invoices, and make direct payment to the NPS/NPA provider. NPS/NPA expenses paid to non-CDE certified providers cannot be paid from state AB602 or federal IDEA dollars.

APPENDIX D: Desert/Mountain Charter SELPA Risk Pool Flow Chart



Desert/Mountain Charter SELPA Risk Pool Flow Chart



**For levels 2-4, one item will place you at this level*




***DESERT MOUNTAIN CHARTER SELPA STEERING AND FINANCE
COMMITTEE SCHEDULE OF MEETINGS 2023-24***

- August 17, 2023
- September 21, 2023
- October 20, 2023
- November 16, 2023
- December 14, 2023
- January 18, 2024
- February 22, 2024
- March 21, 2024
- April 18, 2024
- May 16, 2024
- June 20, 2024

Meetings will be held at 1:00 p.m., at the Desert Mountain Educational Service Center, Apple Valley, CA.



Desert Mountain Children's Center
17800 Highway 18
Apple Valley, CA 92307-1219

 (760) 955-3601
 (760) 946-0819
 www.dmchildrenscenter.org

MEMORANDUM

Date: May 17, 2023
To: Special Education Directors

From: Linda Llamas, Director

Subject: Desert Mountain Children's Center Client Reports

Attached are the opened and closed cases for the following services:

- Screening, Assessment, Referral and Treatment (SART)
- Early Identification Intervention Services (EIS)
- School-Age Treatment Services (SATS)
- Student Assistance Program (SAP)
- Speech and occupational therapy

If you should have any questions, please contact me at (760) 955-3606 or by email at linda.llamas@cahelp.org



Desert Mountain Children's Center
17800 Highway 18
Apple Valley, CA 92307-1219

P 760-552-6700
F 760-946-0819
W www.dmchildrenscenter.org

May 5, 2023

From: DM Children's Center: Linda Llamas, LMFT; Linda.Llamas@cahelp.org

To: Steering Committee Members

Re: Mental Health Research Information Article

As we celebrate Mental Health Awareness Month this May, this year's theme invites us to look around and look within. From our neighborhoods to our physical health and genetics, many factors come into play when it comes to the condition of our mental health. This year's theme gives us an opportunity to explore how the world around us and within us affects our mental well-being.

Take a moment to consider your surroundings. Do you feel safe? Do you have access to health care and grocery stores? Do you have access to parks and/or other green spaces? Does your home support you, both physically and mentally? Now think about the clients/students you serve? How do you think they would answer these questions?

Where a person is born, lives, works, plays, and gathers, as well as their economic stability and social connections, are part of what is called "social determinants of health" (SDOH). The more positive an effect these factors have on you and your family the more likely you are to have positive mental wellbeing. But if these factors have a negative effect on your life, then your mental health will suffer.

We may not often think about how safe and stable housing is connected to our mental health or that of our clients/students, but if you do not feel like your home is safe and stable, how can you be comfortable? It is important to check in with our clients/students about the stability of their housing. We need to ask about their comfort level at home to see if there is any way we can support them in feeling safe and content in their own home.

And if their home is stable, does the space feel calm and positive? If not, why not? Then it's important to help them create a space that is conducive to mental wellbeing. You can ask questions like, is the space tidy? well-lit? well-ventilated? sleep-friendly, etc.? You can inform them that keeping a clean living space is shown to promote calmness, while the living space need not be spotless, clutter can contribute to confusion, depression, stress, and trouble focusing¹ that is why an organized and tidy space is important.

You can also ask about the extended neighborhood and community – do they know their neighbors? Feeling a sense of connection is crucial for mental well-being, and while you can find a sense of connection with many people in many places, finding it nearby with your neighbors provides a sense of community and social support. Strong community among neighbors and nearby residents protects mental health through shared support, resources, and joy. Strong social ties within neighborhoods protect well-being by fostering a sense of teamwork and community care.² Encourage your clients/students to be friendly with their neighbors by waving or saying hello or organizing a neighborhood gathering for folks to come together. If their neighborhood does not feel safe, do they have elsewhere in the community where they can feel safe and comfortable? Is it school? Is it the local library? A local community center? How can you help them find that a space where they can go and feel safe? We all need community to thrive.

Additionally, you can ask your clients/students if they are getting outdoors enough. Are they getting enough sunlight? Fresh air? Spending time in nature is linked to many positive mental health outcomes – better mood, improved focus, lower stress, and reduced risk of developing a mental health condition.³ Even spending time in a backyard can produce positive outcomes and feeling connected to nature helps mood even if you do not spend time outdoors.³ A simple adjustment that can be made, if outdoor time and/or space is limited, is to bring the outdoors inside. Having plants in the home helps to improve focus, memory, and stress tolerance.⁴ Spending time in nature helps children feel connected to themselves, others, and the world around them. This connection helps with emotional regulations, personal growth, self-esteem, and the building of social skills.⁵ Spending time in nature encourages children to be imaginative and independent and to

feel more connected to their peers and other living things. You can encourage your clients/students to connect with nature by getting outside, visiting a community park, planting something or bringing plants inside, and/or making sure they let natural light inside. Research suggest that spending a little time outdoors every day can be as effective, maybe even more effective, than an annual camping trip!⁶ Encouraging your client/students to get outside even for a few minutes every day can lead to long-term positive mental health outcomes.

The research is clear, spending time outdoors is good for all of us, but especially for kids who are more used to spending time in front of screens than outside. Nature is good for kids' minds because it builds confidence, promotes creativity and imagination, teaches responsibility, provides different stimulation, gets kids moving and thinking, and reduces stress and fatigue.⁷

We know that that the world around us can be both positive and negative – bringing joy and sadness, hope and anxiety – helping our clients/students balance the world and their internal needs is integral to our roles. The bottom line is that when we look at our clients/students as whole people and we ask these questions and provide ideas and suggestions about how to create a safe and comfortable space, connect with others, and interact more with nature, we are helping them learn how to improve their mental health.

Celebrate this year's mental health awareness month by tidying up or re-organizing your space, connecting with others, and/or getting outside!

References:

1. Brown K. W., Ryan R.M. (2003). The benefits of being present: mindfulness and its role in psychological well-being. *J Pers Soc Psychol.* 2003 Apr;84(4):822- 48. doi: 10.1037/0022-3514.84.4.822. PMID: 12703651.
2. Bowe, M., Wakefield, J. R. H., Kellezi, B., Stevenson, C., McNamara, N., Jones, B. A., Sumich, A., & Heym, N. (April 2021). The mental health benefits of community helping during crisis: Coordinated helping, community identification and sense of unity during the COVID-19 pandemic. *Journal of Community & Applied Social Psychology / Volume 32, Issue 3, p. 521-535.* <https://doi.org/10.1002/casp.2520>
3. American Psychological Association. (April 1, 2020). Nurtured by nature. *Monitor on Psychology*, 51(3). <https://www.apa.org/monitor/2020/04/nurtured-nature>
4. Han K. T., Ruan L. W., & Liao L. S. (June 17, 2022). Effects of Indoor Plants on Human Functions: A Systematic Review with Meta-Analyses. *International Journal of Environmental Research and Public Health.* 2022; 19(12):7454. <https://doi.org/10.3390/ijerph19127454>
5. Capaldi, C. A., Passmore, H.-A., Nisbet, E. K., Zelenski, J. M., & Dopko, R. L. (2015). Flourishing in nature: A review of the benefits of connecting with nature and its application as a wellbeing intervention. *International Journal of Wellbeing*, 5(4), 1-16. doi:10.5502/ijw.v5i4.449
6. <https://www.hsph.harvard.edu/news/hsph-in-the-news/boost-your-mental-health-by-spending-time-outside/>
7. <https://childmind.org/article/why-kids-need-to-spend-time-in-nature/>

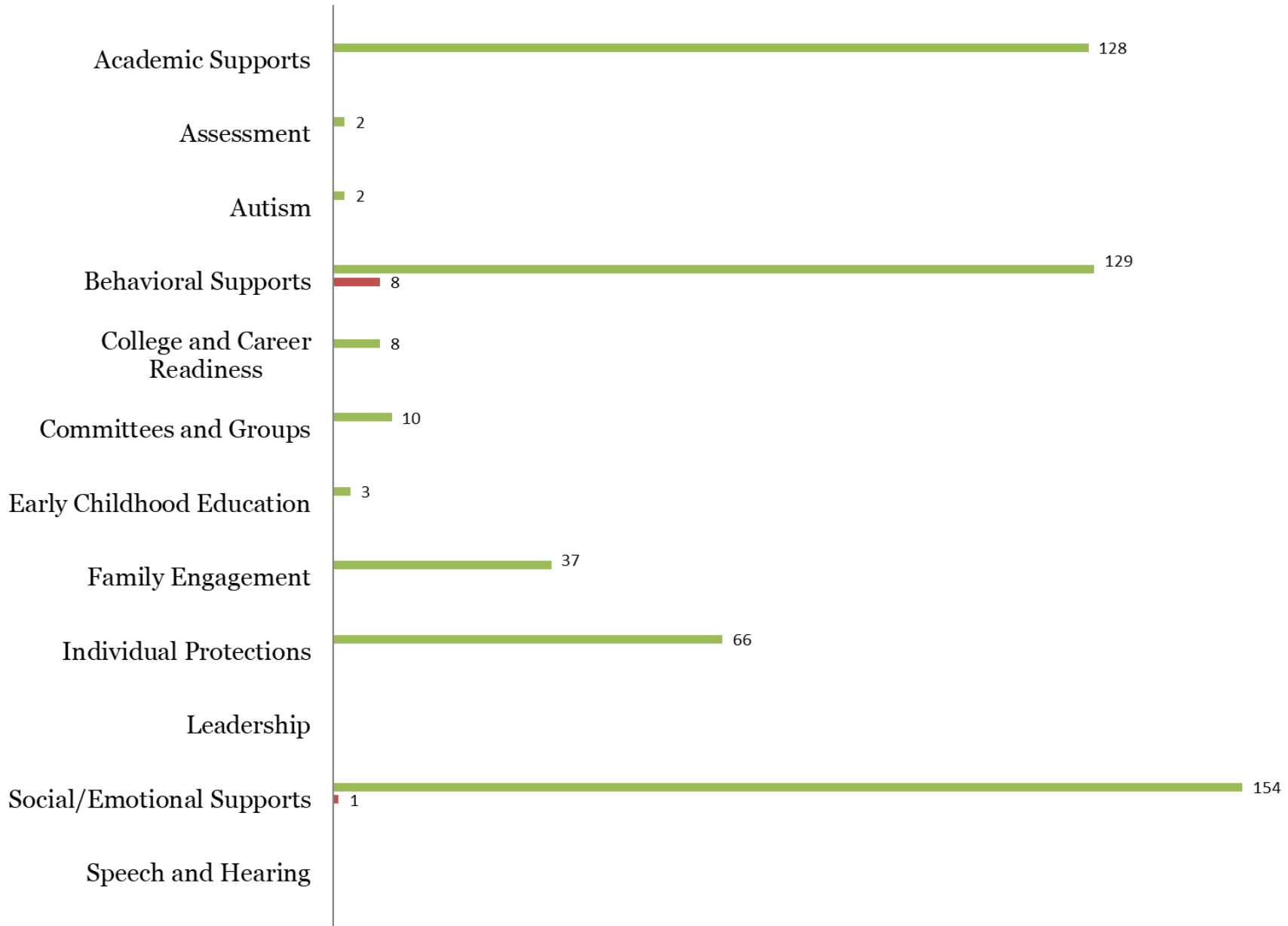
Additional References/Resources:

- <https://www.mhanational.org/>
- <https://www.cdc.gov/mentalhealth/learn/index.htm>
- <https://www.mentalhealth.gov/>
- <https://www.samhsa.gov/>
- <https://www.nami.org/Get-Involved/Awareness-Events/Mental-Health-Awareness-Month>

DMCS PROFESSIONAL LEARNING PARTICIPATION SUMMARY

APRIL 2023 PARTICIPANTS - 9
539 YEAR-TO-DATE PARTICIPANTS

■ Total Participants YTD by Content Area ■ On-Site Trainings ■ Regional Trainings



Desert Mountain Charter SELPA
 Due Process Activity Summary
 July 1, 2022–April 30, 2023

LEA	Issue(s)	Date Filed	Resolution Scheduled	Mediation Scheduled	Due Process Hearing	Status	IEE	Comp Ed
1. Aveson School of Leaders Case no. 2022070523	Denial of FAPE 1. Comprehensive assessment 2. Failure to develop/implement IEP 3. Parent participation	7/19/2022	7/27/2022	9/1/2022	9/7-8/2/2022 10/4-10/6/2022	Unexpectedly, parent demanded NPS. Moving to mediation. 9/27/22 Judge declined continuance 9/27/22 - Case dismissed by parent CLOSED - Mediation	N/A	N/A
2. Odyssey Altadena Case no. 2022070179	Child Find 1. Failure to assess prior to May 26, 2022 2. Failure to assess upon parent request 3. Failure to find an IEE in a timely manner	7/7/2022	N/A	8/15/2022 9/19/2022	8/23-25-2022 11/8-10/2022	Resolution waived due to timeline violation. 9/23/22 Case settled CLOSED - Resolution	Psych Ed \$4,500	Academic \$4,500
3. Aveson School of Leaders Case no. 2022080 Filing on parent	Denial of an IEE Filed to defend assessment	8/24/2022	N/A	N/A	N/A	Case withdrawn CLOSED - Resolution	N/A	N/A
4. AGLA Case no. 2023020091 Filing against the student	Denial of FAPE: LRE Deny request for private placement.	2/3/2023	N/A	4/12/2023	5/16-18/2023	12/22 - Preparing for filing to defend IEP against private placement 01/23 - Parent visiting classes and schools - filing delayed 2/23 - Filed on parent 5/1/23 - Settlement Permanent disenrollment CLOSED - Mediation		\$28,500 ED Services NPA or NPS

Desert Mountain Charter SELPA
 Due Process Activity Summary
 July 1, 2022–April 30, 2023

LEA	Issue(s)	Date Filed	Resolution Scheduled	Mediation Scheduled	Due Process Hearing	Status	IEE	Comp Ed
5. AGLA Case no. 2023010682	Failure to assess 1. Psycho Ed 2. Academic 3. OT 4. FBA 5. Transition 6. AT 7. ERMHS Denial of FAPE 1. Inaccurate Goals 2. Unreasonable Placement 3. Lack of progress 4. Failure to provide services 5. Failure to provide research based intervention for ADHD	1/25/2023	2/6/2023 Cancelled	4/23/2023 4/24/2023	3/14-16/2023 5/23-25/2023	2/6/23 - Resolution canceled 4/24/23 - Regressive bargaining - demanding \$106,000. Between attorneys down to \$73,000 4/24/23 - Settlement - permanent disenrollment CLOSED - Mediation		
6. Odyssey Altadena Case no. 2023040505	Denial of FAPE: 1. Found ineligible of SPED 2. Failure to properly assess	4/13/2023	4/26/2023		6/6-8/2023	4/26/26 - 504 agreed to a disability, no impact on school performance. Parent insisting inflated success, seeking private 2E placement. Parent attorney no show to resolution		
7. Odyssey South Case no. 2023040550	Denial of FAPE: 1. Failure to properly assess 2. Placement	4/17/2023	4/26/2023 Canceled	6/1/2023	7/25-27/2023	4/26/26 - Agreed to waive reso Parent seeking NPS placement at Frostig		

Desert Mountain Charter SELPA
Legal Expense Summary
As Reported at Steering May 18, 2023

2000-2001	0.00
2001-2002	0.00
2002-2003	0.00
2003-2004	0.00
2004-2005	0.00
2005-2006	0.00
2006-2007	0.00
2007-2008	0.00
2008-2009	0.00
2009-2010	0.00
2010-2011	0.00
2011-2012	0.00
2012-2013	0.00
2013-2014	0.00
2014-2015	0.00
2015-2016	\$7,378.00
2016-2017	\$33,886.61
2017-2018	\$70,994.67
2018-2019	\$113,834.81
2019-2020	\$58,033.90
2020-2021	\$43,640.20
2021-2022	\$174,116.17
2022-2023	\$43,927.25

Desert Mountain Charter SELPA

OVERDUE IEP SUMMARY

As of 05/08/23

LEA	Number of Overdue IEPs
Allegiance STEAM Academy -Thrive	1
ASA Charter	4
Aveson Global Leadership Academy	4
Aveson School of Leaders	1
Ballington Academy for the Arts and Sciences	0
Desert Trails Charter	8
Elite Academic Academy	6
Encore JR/SR Charter High Desert	6
Julia Lee Performing Arts Academy	6
LaVerne Prep	4
Leonardo da Vinci Health Sciences	3
Odyssey Charter School	12
Odyssey Charter School South	12
Pasadena Rosebud Academy	3
Pathways to College	1
Taylion Charter Schools	7
Virtual Prep Academy	8
Total	86

Desert Mountain Charter SELPA
 Learning Recovery Support (Resource 6537) Claim Summary
 May 1, 2023

Total Apportionment	413,801
Desert/Mountain Charter SELPA Allocation (20%)	82,760
Charter Allocation	331,041

Funds must be encumbered no later than June 30, 2023 and expended by September 30, 2023.

LEA	Allocation by LEA	Amount Claimed	Balance
Allegiance STEAM Academy	43,834	42,788.75	1,045.25
Aveson Global Leadership Academy	31,049	-	31,049.00
Aveson School of Leaders	21,004	-	21,004.00
Ballington Academy	11,415	-	11,415.00
Desert Trails Preparatory Academy	17,351	-	17,351.00
Elite Academic Academy Lucerne	25,570	25,570.00	-
Encore High School	52,055	-	52,055.00
Julia Lee Performing Arts Academy	20,091	-	20,091.00
Laverne Elementary Preparatory Academy	10,045	-	10,045.00
Leonardo da Vinci	15,525	-	15,525.00
Odyssey Charter School	25,113	25,113.00	-
Odyssey Charter School South	12,328	12,000.00	328.00
Pasadena Rosebud Academy	5,936	-	5,936.00
Pathways to College	22,374	-	22,374.00
Taylion High Desert Academy	15,068	15,068.00	-
Virtual Prep Lucerne	2,283	-	2,283.00
DM Charter SELPA	82,760	27,421.62	55,338.38
Total	413,801	147,961.37	265,839.63
		35.76%	

Desert Mountain Charter SELPA
 Dispute Prevention Dispute Resolution (Resource 6536) Claim Summary
 May 1, 2023

Total Apportionment	91,956
Desert/Mountain Charter SELPA Allocation (20%)	18,391
Charter Allocation	73,565

Funds must be encumbered no later than June 30, 2023 and expended by September 30, 2023.

LEA	Allocation by LEA	Amount Claimed	Balance
Allegiance STEAM Academy	9,741	-	9,741.00
Aveson Global Leadership Academy	6,900	-	6,900.00
Aveson School of Leaders	4,668	-	4,668.00
Ballington Academy	2,537	-	2,537.00
Desert Trails Preparatory Academy	3,856	-	3,856.00
Elite Academic Academy Lucerne	5,682	5,682.00	-
Encore High School	11,567	-	11,567.00
Julia Lee Performing Arts Academy	4,465	-	4,465.00
Laverne Elementary Preparatory Academy	2,232	-	2,232.00
Leonardo da Vinci	3,450	-	3,450.00
Odyssey Charter School	5,581	3,027.57	2,553.43
Odyssey Charter School South	2,740	2,700.00	40.00
Pasadena Rosebud Academy	1,319	-	1,319.00
Pathways to College	4,972	-	4,972.00
Taylion High Desert Academy	3,348	3,348.00	-
Virtual Prep Lucerne	507	-	507.00
DM Charter SELPA	18,391	1,105.32	17,285.68
	91,956	15,862.89	76,093.11

17.25%



Desert/Mountain Special Education Local Plan Area
17800 Highway 18
Apple Valley, CA 92307-1219

P 760-552-6700
F 760-242-5363
W www.dmselpa.org

MEMORANDUM

Date: May 18, 2023

To: Directors of Special Education

From: Codi Andersen, Occupational/Physical Therapy Supervisor

Subject: **Occupational and Physical Therapy Reports**

Attached are the occupational and physical therapy Current Students Direct Services reports by district.

If you have any questions concerning either report, please contact me at (760) 955-3659 at Codi.Andersen@cahelp.org

Upcoming Trainings

Date/Time	Event	Location
5/22/2023 3:30 PM - 5:00 PM	REAL TALK AUTISM EDITION: RESOURCES AND SUPPORT FOR EDUCATORS	VIRTUAL
5/22/2023 3:30 PM - 5:00 PM	REAL TALK AUTISM EDITION: RESOURCES AND SUPPORT FOR EDUCATORS	VIRTUAL
5/22/2023 2:00 PM - 3:00 PM	REAL TALK AUTISM EDITION: RESOURCES AND SUPPORTS FOR CLINICIANS	VIRTUAL
5/22/2023 3:00 PM - 4:00 PM	SEIS FORMS REVIEW	VIRTUAL
5/26/2023 9:00 AM - 12:00 PM	SEIS TRAINING MORNING SESSION	VIRTUAL
6/1/2023 -	STRUCTURED LITERACY: WHAT, WHY, WHO, AND HOW? (SELF-PACED COURSE)	VIRTUAL
6/12/2023 3:00 PM - 4:00 PM	SEIS FORMS REVIEW	VIRTUAL
6/13/2023 1:00 PM - 4:00 PM	SEIS TRAINING AFTERNOON SESSION	VIRTUAL
6/21/2023 1:00 PM - 4:00 PM	SEIS TRAINING AFTERNOON SESSION	VIRTUAL
6/26/2023 3:00 PM - 4:00 PM	SEIS FORMS REVIEW	VIRTUAL

For more information, visit the CAHELP Staff Development calendar ([url: www.cahelp.org/calendar](http://www.cahelp.org/calendar))
17800 Highway 18, Apple Valley, California 92307
(760) 552-6700 Office * (760) 242-5363 Fax